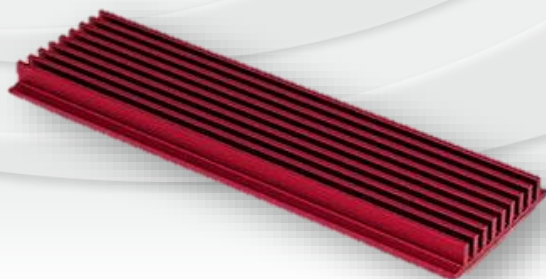




Heat sink

MODEL NAME

# TEANN210470-000



MOUNTING PITCH

OVER ALL DIMENSION

WEIGHT

N/A<sub>mm</sub>

21.3<sub>W</sub>\*4.1<sub>H</sub>\*70<sub>Lmm</sub>

8.9<sub>G±5%</sub>

|                            |         |
|----------------------------|---------|
| MATERIAL                   | AL SINK |
| THERMAL INTERFACE MATERIAL | 30GTR-B |
| THERMAL RESISTANCE         | N/A     |
| FAN DIMENSION              | N/A     |
| RATED SPEED                | N/A     |
| AIR FLOW                   | N/A     |
| ACOUSTIC NOISE             | N/A     |

### NOTE

M.2-2280 SSD Heatsink

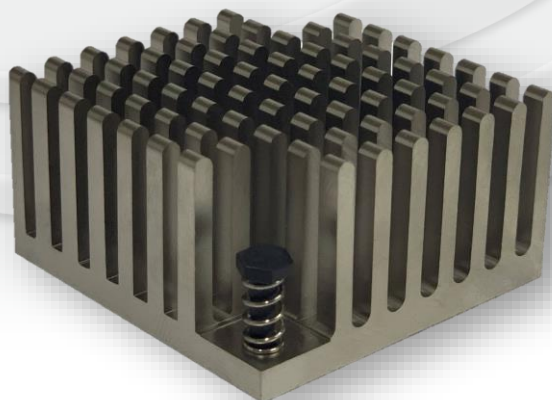
----



Heat sink

MODEL NAME

# TEANN452445-001



**MOUNTING PITCH**

**OVER ALL DIMENSION**

**WEIGHT**

**37\*37<sub>mm</sub>**

**45<sub>W</sub>\*24<sub>H</sub>\*45<sub>Lmm</sub>**

**48.9<sub>G</sub>±5%**

|                                   |         |
|-----------------------------------|---------|
| <b>MATERIAL</b>                   | AL SINK |
| <b>THERMAL INTERFACE MATERIAL</b> | N/A     |
| <b>THERMAL RESISTANCE</b>         | N/A     |
| <b>FAN DIMENSION</b>              | N/A     |
| <b>RATED SPEED</b>                | N/A     |
| <b>AIR FLOW</b>                   | N/A     |
| <b>ACOUSTIC NOISE</b>             | N/A     |

### NOTE

-----  
-----



Heat sink

MODEL NAME

# TEANN866085-002



MOUNTING PITCH

OVER ALL DIMENSION

WEIGHT

**75\*65**<sub>mm</sub>

**85.8<sub>W</sub>\*60<sub>H</sub>\*85<sub>L</sub>**<sub>mm</sub>

**370**<sub>G±5%</sub>

|                            |                   |
|----------------------------|-------------------|
| MATERIAL                   | AL SINK           |
| THERMAL INTERFACE MATERIAL | ShunEtsu_X23-7762 |
| THERMAL RESISTANCE         | N/A               |
| FAN DIMENSION              | N/A               |
| RATED SPEED                | N/A               |
| AIR FLOW                   | N/A               |
| ACOUSTIC NOISE             | N/A               |

## NOTE

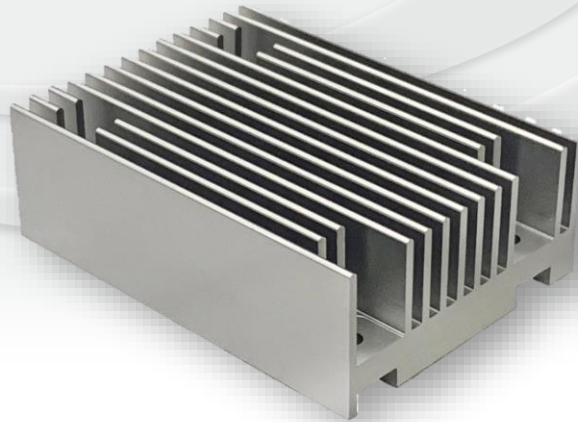
-----  
-----



Heat sink

MODEL NAME

# TEANN442060-003



MOUNTING PITCH

OVER ALL DIMENSION

WEIGHT

30\*46<sub>mm</sub>

43.6<sub>W</sub>\*20<sub>H</sub>\*60<sub>L</sub><sub>mm</sub>

370<sub>G±5%</sub>

|                            |         |
|----------------------------|---------|
| MATERIAL                   | AL SINK |
| THERMAL INTERFACE MATERIAL | N/A     |
| THERMAL RESISTANCE         | N/A     |
| FAN DIMENSION              | N/A     |
| RATED SPEED                | N/A     |
| AIR FLOW                   | N/A     |
| ACOUSTIC NOISE             | N/A     |

## NOTE

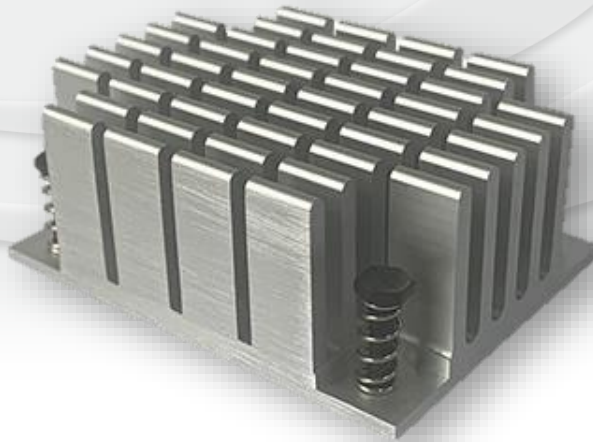
-----  
-----



Heat sink

MODEL NAME

# TEANN452460-004



MOUNTING PITCH

OVER ALL DIMENSION

WEIGHT

35\*49.5<sub>mm</sub>

45<sub>W</sub>\*24<sub>H</sub>\*60<sub>L</sub><sub>mm</sub>

79<sub>G±5%</sub>

|                            |                   |
|----------------------------|-------------------|
| MATERIAL                   | AL SINK           |
| THERMAL INTERFACE MATERIAL | ShunEtsu X23-7762 |
| THERMAL RESISTANCE         | N/A               |
| FAN DIMENSION              | N/A               |
| RATED SPEED                | N/A               |
| AIR FLOW                   | N/A               |
| ACOUSTIC NOISE             | N/A               |

## NOTE

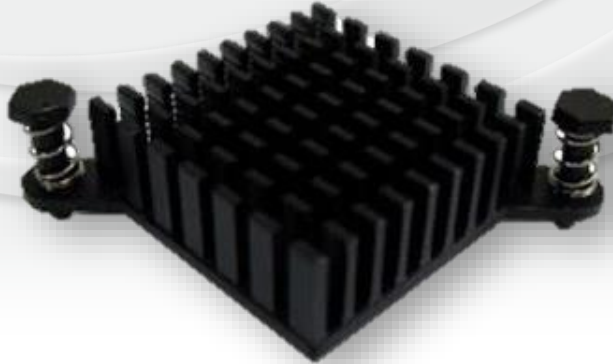
-----  
-----



Heat sink

MODEL NAME

# TEANN281028-005



**MOUNTING PITCH**

**OVER ALL DIMENSION**

**WEIGHT**

**32.9\*32.9<sub>mm</sub>**

**28.2<sub>W</sub>\*10<sub>H</sub>\*28.2<sub>Lmm</sub>**

**9<sub>G±5%</sub>**

|                            |         |
|----------------------------|---------|
| MATERIAL                   | AL SINK |
| THERMAL INTERFACE MATERIAL | TM730   |
| THERMAL RESISTANCE         | N/A     |
| FAN DIMENSION              | N/A     |
| RATED SPEED                | N/A     |
| AIR FLOW                   | N/A     |
| ACOUSTIC NOISE             | N/A     |

## NOTE

ADD FAN(3010) COOLER MODEL NAME : TEAAN282028-002

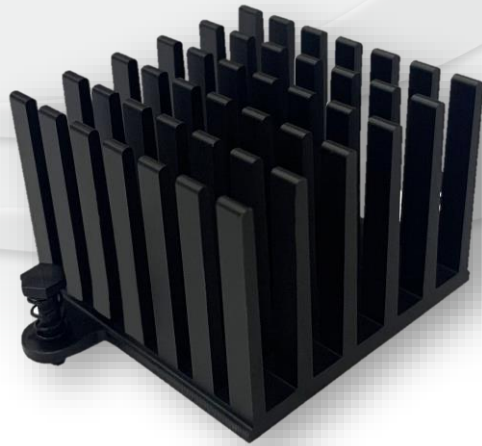
----



Heat sink

MODEL NAME

# TEANN413041-007



**MOUNTING PITCH**

**OVER ALL DIMENSION**

**WEIGHT**

**50.8\*20<sub>mm</sub>**

**41.1<sub>W</sub>\*30<sub>H</sub>\*41.1<sub>Lmm</sub>**

**35.6<sub>G</sub>±5%**

|                                   |          |
|-----------------------------------|----------|
| <b>MATERIAL</b>                   | AL SINK  |
| <b>THERMAL INTERFACE MATERIAL</b> | SMX-8067 |
| <b>THERMAL RESISTANCE</b>         | N/A      |
| <b>FAN DIMENSION</b>              | N/A      |
| <b>RATED SPEED</b>                | N/A      |
| <b>AIR FLOW</b>                   | N/A      |
| <b>ACOUSTIC NOISE</b>             | N/A      |

## NOTE

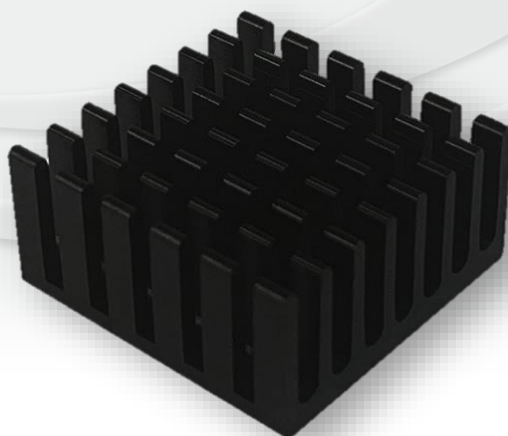
-----  
-----



Heat sink

MODEL NAME

# TEANN201020-008



MOUNTING PITCH

OVER ALL DIMENSION

WEIGHT

N/A<sub>mm</sub>

20<sub>W</sub> \* 10<sub>H</sub> \* 20<sub>L</sub>mm

4<sub>G</sub>±5%

|                            |         |
|----------------------------|---------|
| MATERIAL                   | AL SINK |
| THERMAL INTERFACE MATERIAL | 3M9448B |
| THERMAL RESISTANCE         | N/A     |
| FAN DIMENSION              | N/A     |
| RATED SPEED                | N/A     |
| AIR FLOW                   | N/A     |
| ACOUSTIC NOISE             | N/A     |

## NOTE

-----  
-----

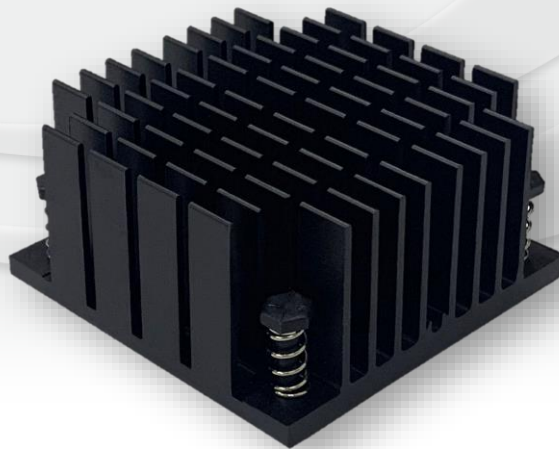




Heat sink

MODEL NAME

# TEANN502550-009



MOUNTING PITCH

OVER ALL DIMENSION

WEIGHT

40\*40mm

50<sub>W</sub>\*25<sub>H</sub>\*50<sub>L</sub>mm

50.3G±5%

|                            |           |
|----------------------------|-----------|
| MATERIAL                   | AL SINK   |
| THERMAL INTERFACE MATERIAL | PCS CR 10 |
| THERMAL RESISTANCE         | N/A       |
| FAN DIMENSION              | N/A       |
| RATED SPEED                | N/A       |
| AIR FLOW                   | N/A       |
| ACOUSTIC NOISE             | N/A       |

## NOTE

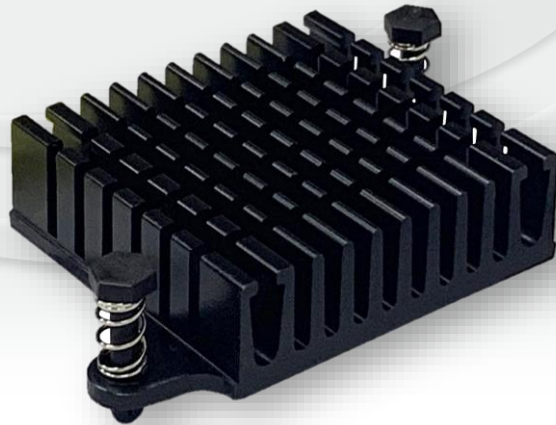
-----  
-----



Heat sink

MODEL NAME

# TEANN381036-010



MOUNTING PITCH

**51\*20**<sub>mm</sub>

OVER ALL DIMENSION

**38.8<sub>W</sub>\*10<sub>H</sub>\*36<sub>L</sub>**<sub>mm</sub>

WEIGHT

**18.6<sub>G</sub>±5%**

|                            |         |
|----------------------------|---------|
| MATERIAL                   | AL SINK |
| THERMAL INTERFACE MATERIAL | N/A     |
| THERMAL RESISTANCE         | N/A     |
| FAN DIMENSION              | N/A     |
| RATED SPEED                | N/A     |
| AIR FLOW                   | N/A     |
| ACOUSTIC NOISE             | N/A     |

## NOTE

ADD FAN(4010) COOLER MODEL NAME : TEAAN4002240-000

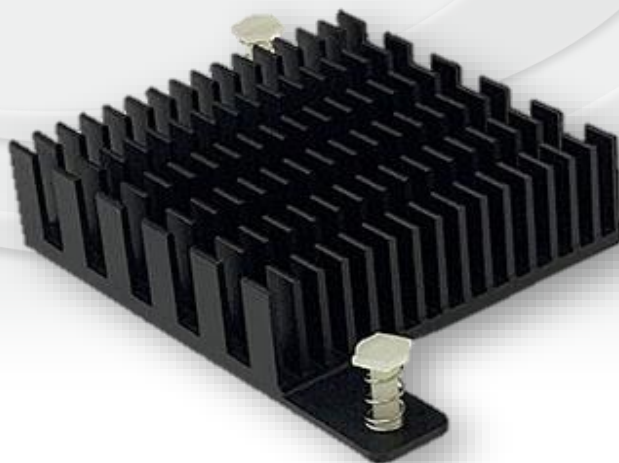
----



Heat sink

MODEL NAME

# TEANN501583-012



MOUNTING PITCH

OVER ALL DIMENSION

WEIGHT

73.4\*39.6mm

50<sub>W</sub>\*15<sub>H</sub>\*83.3<sub>L</sub>mm

32.2<sub>G</sub>±5%

|                            |            |
|----------------------------|------------|
| MATERIAL                   | AL SINK    |
| THERMAL INTERFACE MATERIAL | GR45A Grey |
| THERMAL RESISTANCE         | N/A        |
| FAN DIMENSION              | N/A        |
| RATED SPEED                | N/A        |
| AIR FLOW                   | N/A        |
| ACOUSTIC NOISE             | N/A        |

## NOTE

-----  
-----



Heat sink

MODEL NAME

# TSANN603260-000



**MOUNTING PITCH**

**51\*51**<sub>mm</sub>

**OVER ALL DIMENSION**

**60**<sub>W</sub>**\*31.5**<sub>H</sub>**\*60**<sub>Lmm</sub>

**WEIGHT**

**79.73**<sub>G±5%</sub>

|                                   |                   |
|-----------------------------------|-------------------|
| <b>MATERIAL</b>                   | AL SINK           |
| <b>THERMAL INTERFACE MATERIAL</b> | ShinEtsu X23-7762 |
| <b>THERMAL RESISTANCE</b>         | N/A               |
| <b>FAN DIMENSION</b>              | N/A               |
| <b>RATED SPEED</b>                | N/A               |
| <b>AIR FLOW</b>                   | N/A               |
| <b>ACOUSTIC NOISE</b>             | N/A               |

## NOTE

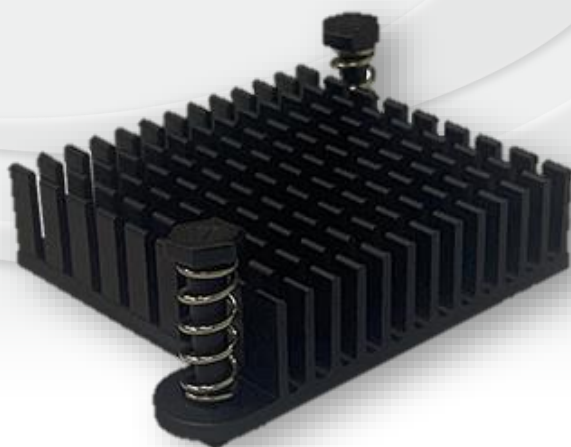
-----  
-----



Heat sink

MODEL NAME

# TEANN351035-013



MOUNTING PITCH

OVER ALL DIMENSION

WEIGHT

26\*41 mm

35<sub>W</sub>\*10<sub>H</sub>\*35<sub>L</sub>mm

12.7<sub>G</sub>±5%

|                            |             |
|----------------------------|-------------|
| MATERIAL                   | AL SINK     |
| THERMAL INTERFACE MATERIAL | TC-CAB Pink |
| THERMAL RESISTANCE         | N/A         |
| FAN DIMENSION              | N/A         |
| RATED SPEED                | N/A         |
| AIR FLOW                   | N/A         |
| ACOUSTIC NOISE             | N/A         |

## NOTE

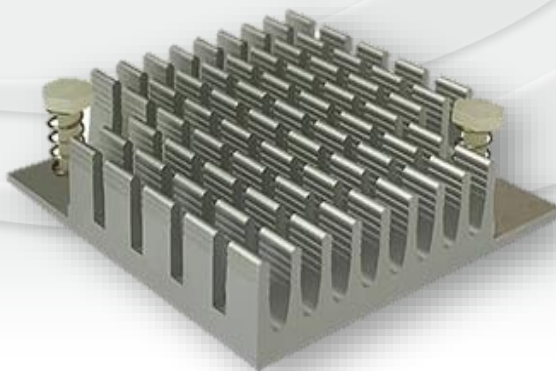
---  
---



Heat sink

MODEL NAME

# TEANN451045-014



**MOUNTING PITCH**

**OVER ALL DIMENSION**

**WEIGHT**

**33\*33<sub>mm</sub>**

**45<sub>W</sub>\*10<sub>H</sub>\*45<sub>Lmm</sub>**

**23.3<sub>G</sub>±5%**

|                            |         |
|----------------------------|---------|
| MATERIAL                   | AL SINK |
| THERMAL INTERFACE MATERIAL | N/A     |
| THERMAL RESISTANCE         | N/A     |
| FAN DIMENSION              | N/A     |
| RATED SPEED                | N/A     |
| AIR FLOW                   | N/A     |
| ACOUSTIC NOISE             | N/A     |

## NOTE

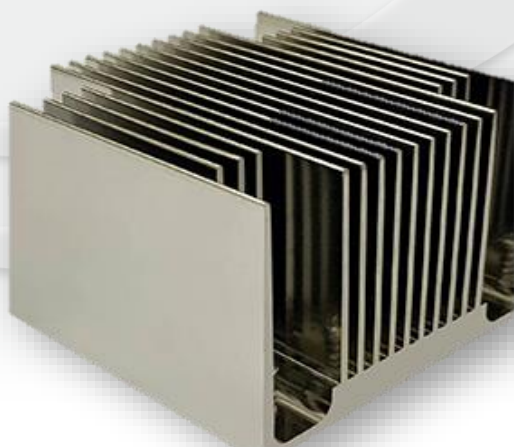
-----  
-----



Heat sink

MODEL NAME

# TEANN664766-015



**MOUNTING PITCH**

**OVER ALL DIMENSION**

**WEIGHT**

**50\*50**<sub>mm</sub>

**66<sub>W</sub>\*47<sub>H</sub>\*66<sub>L</sub>**<sub>mm</sub>

**239**<sub>G±5%</sub>

|                                   |                   |
|-----------------------------------|-------------------|
| <b>MATERIAL</b>                   | AL SINK           |
| <b>THERMAL INTERFACE MATERIAL</b> | ShinEtsu X23-7762 |
| <b>THERMAL RESISTANCE</b>         | N/A               |
| <b>FAN DIMENSION</b>              | N/A               |
| <b>RATED SPEED</b>                | N/A               |
| <b>AIR FLOW</b>                   | N/A               |
| <b>ACOUSTIC NOISE</b>             | N/A               |

## NOTE

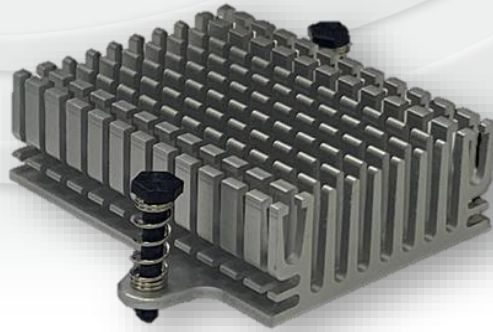
-----  
-----



Heat sink

MODEL NAME

# TEANN391550-016



**MOUNTING PITCH**

**OVER ALL DIMENSION**

**WEIGHT**

**51\*20** mm

**57.8<sub>W</sub>\*15<sub>H</sub>\*50<sub>L</sub>** mm

**28** g $\pm$ 5%

|                                   |         |
|-----------------------------------|---------|
| <b>MATERIAL</b>                   | AL SINK |
| <b>THERMAL INTERFACE MATERIAL</b> | GR-m    |
| <b>THERMAL RESISTANCE</b>         | N/A     |
| <b>FAN DIMENSION</b>              | N/A     |
| <b>RATED SPEED</b>                | N/A     |
| <b>AIR FLOW</b>                   | N/A     |
| <b>ACOUSTIC NOISE</b>             | N/A     |

## NOTE

ADD FAN(4010) COOLER MODEL NAME : TEAAN392750-007

----