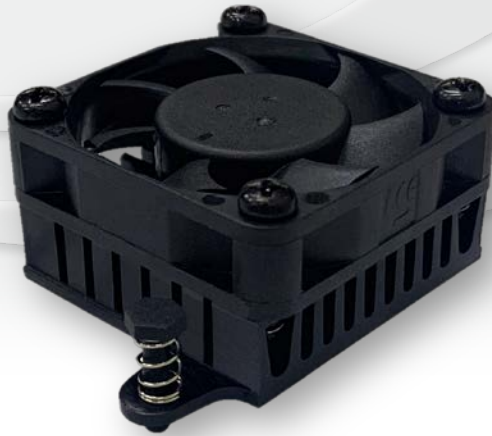


MODEL NAME

TEAAN402240-000



MOUNTING PITCH

51*20_{mm}

OVER ALL DIMENSION

40_W***22**_H***40**_Lmm

WEIGHT

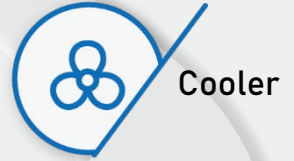
37_G±5%

MATERIAL	AL SINK + FAN
THERMAL INTERFACE MATERIAL	T725
THERMAL RESISTANCE	2 (°C/W)
FAN DIMENSION	Axial Fan 4010
RATED SPEED	5800 RPM ± 15% at rated voltage
AIR FLOW	7.0 CFM
ACOUSTIC NOISE	20.6 dB(A)

NOTE

Test Conditions: Heater Dimension: 15*15mm ; Power: 10W ; Ta: Chamber 40°C ; Tc: 60°C

HEATSINK MODEL NAME : TEANN381036-006



MODEL NAME

TEAAN603060-001



MOUNTING PITCH

51*51_{mm}

OVER ALL DIMENSION

60_W*30_H*60_L_{mm}

WEIGHT

125_{G±5%}

MATERIAL	AL SINK + FAN
THERMAL INTERFACE MATERIAL	HENKEL PSX
THERMAL RESISTANCE	0.61 (°C/W)
FAN DIMENSION	Axial Fan 6010
RATED SPEED	4000 RPM ± 15% at rated voltage
AIR FLOW	16.3 CFM
ACOUSTIC NOISE	28.5 dB(A)

NOTE

Test Conditions: Heater Dimension: 30*30mm ; Power: 15W ; Ta: Chamber 40°C ; Tc: 50°C



Cooler

MODEL NAME

TEAAN282028-002



MOUNTING PITCH

32.9*32.9_{mm}

OVER ALL DIMENSION

28.2_W*20_H*28.2_{Lmm}

WEIGHT

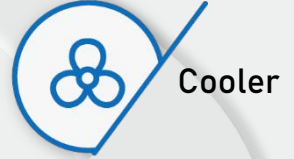
20_{G±5%}

MATERIAL	AL SINK + FAN
THERMAL INTERFACE MATERIAL	T725
THERMAL RESISTANCE	2.268 (°C/W)
FAN DIMENSION	Axial Fan 3010
RATED SPEED	8600 RPM ± 15% at rated voltage
AIR FLOW	4.6 CFM
ACOUSTIC NOISE	20.0 dB(A)

NOTE

Test Conditions: Heater Dimension: 20mm ; Power: 5W ; Ta: Chamber: 40°C ; Tc: 51°C

HEATSINK MODEL NAME : TEANN281028-005



MODEL NAME

TEAAN381638-003



MOUNTING PITCH

43.5*43.5_{mm}

OVER ALL DIMENSION

38_W*16.4_H*38_{Lmm}

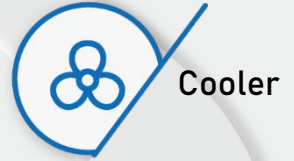
WEIGHT

24_{G±5%}

MATERIAL	AL SINK + FAN
THERMAL INTERFACE MATERIAL	N/A
THERMAL RESISTANCE	2.299 (°C/W)
FAN DIMENSION	Axial Fan 4010
RATED SPEED	5800 RPM ± 15% at rated voltage
AIR FLOW	7.0 CFM
ACOUSTIC NOISE	20.6 dB(A)

NOTE

Test Conditions: Heater Dimension: 20mm ; Power: 5W ; Ta: Chamber: 40°C ; Tc: 52°C



MODEL NAME

TEAAN957000-004



MOUNTING PITCH

75*75_{mm}

OVER ALL DIMENSION

Ø95_w*69.8_{Hmm}

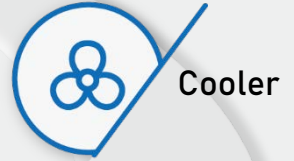
WEIGHT

423_{G±5%}

MATERIAL	AL SINK + FAN
THERMAL INTERFACE MATERIAL	HQ-G50
THERMAL RESISTANCE	0.203 (°C/W)
FAN DIMENSION	Dish Fan 9625
RATED SPEED	4500 RPM ± 10% at rated voltage
AIR FLOW	80.06 CFM
ACOUSTIC NOISE	50.0 dB(A)

NOTE

Test Conditions: Heater Dimension: 30*30mm ; Power: 95W ; Ta: Chamber: 40°C ; Tc: 60°C



MODEL NAME

TEAAN954700-005



MOUNTING PITCH

75*75_{mm}

OVER ALL DIMENSION

Ø95_w*46.4_{Hmm}

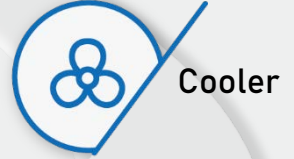
WEIGHT

279.6_G±5%

MATERIAL	AL SINK + FAN
THERMAL INTERFACE MATERIAL	HQ-G50
THERMAL RESISTANCE	0.252 (°C/W)
FAN DIMENSION	Dish Fan 9625
RATED SPEED	4500 RPM ± 10% at rated voltage
AIR FLOW	80.06 CFM
ACOUSTIC NOISE	50.0 dB(A)

NOTE

Test Conditions: Heater Dimension: 30*30mm ; Power: 45W ; Ta: Chamber: 40°C ; Tc: 52°C



MODEL NAME

TPAAP706575-000



MOUNTING PITCH

75*75_{mm}

OVER ALL DIMENSION

70_W*65_H*75_{Lmm}

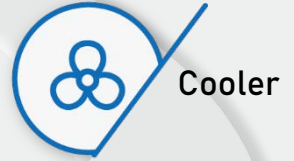
WEIGHT

300_{G±5%}

MATERIAL	AL SINK + FAN
THERMAL INTERFACE MATERIAL	N/A
THERMAL RESISTANCE	0.185 (°C/W)
FAN DIMENSION	Axial Fan 6025
RATED SPEED	7600 RPM ± 10% at rated voltage
AIR FLOW	35.0 CFM
ACOUSTIC NOISE	47.6 dB(A)

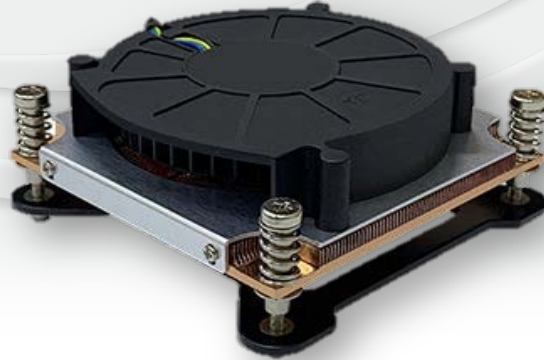
NOTE

Test Conditions: Heater Dimension: 30*30mm ; Power: 95W ; Ta: Chamber: 40°C ; Tc: 58°C



MODEL NAME

TSCBN852682-000



MOUNTING PITCH

75*75_{mm}

OVER ALL DIMENSION

85_W***26.3**_H***82**_{Lmm}

WEIGHT

387_{G±5%}

MATERIAL	Cu SINK + FAN
THERMAL INTERFACE MATERIAL	X23-7762
THERMAL RESISTANCE	0.38(°C/W)
FAN DIMENSION	Blower Fan 8015
RATED SPEED	4500 RPM ± 10% at rated voltage
AIR FLOW	11.12 CFM
ACOUSTIC NOISE	56 dB(A)

NOTE

Test Conditions: Heater Dimension: 30*30mm ; Power: 65W ; Ta: Chamber: 25°C ; Tc: 50°C